



2010

Commemorative Book for the New Campuses of HKDI and IVE (Lee Wai Lee)

HKDI & IVE (Lee Wai Lee)

Follow this and additional works at: <https://repository.vtc.edu.hk/ive-adm-others-sp>



Part of the [History Commons](#), and the [Vocational Education Commons](#)

Recommended Citation

HKDI & IVE (Lee Wai Lee) (2010). Commemorative Book for the New Campuses of HKDI and IVE (Lee Wai Lee). Retrieved from <https://repository.vtc.edu.hk/ive-adm-others-sp/44>

This Book is brought to you for free and open access by the Support & Other Units at VTC Institutional Repository. It has been accepted for inclusion in Staff Publications by an authorized administrator of VTC Institutional Repository. For more information, please contact wchu@vtc.edu.hk.



INSPIRING
CREATIVITY

**COMMEMORATIVE BOOK FOR
THE NEW CAMPUSES OF HKDI & IVE (LEE WAI LEE)**

■ ■ The new campuses of the HKDI and IVE (Lee Wai Lee), located in the harmonious new town of Tseung Kwan O, mark a new era of innovative and professional vocational education in Hong Kong. I offer my sincere congratulations on their establishment and trust that the new campuses will provide an excellent nurturing ground for many young talents in the city. ■ ■

Mr George NG Sze Fuk, SBS, JP *Chairman, Sai Kung District Council*

■ ■ **Creativity is the core attribute for the advancement of Hong Kong's economy. Our innovation in product development and marketing stand us in good stead in maintaining a leading position in the global trading regime.** ■ ■

Mr Tom TANG Chung Yen, JP *Chairman, The Hong Kong Exporters' Association*

■ ■ The opening of the HKDI and IVE (Lee Wai Lee) mega-campus is a major milestone for vocational education in Hong Kong. With their campuses combined, the two institutes will be more focused and will benefit from sharing resources. Of particular importance to the Federation of Watch Trades and Industries is that the IVE (Lee Wai Lee) is the only institute in Hong Kong providing watch and clock technology courses. Its new Professional Development Centre will certainly benefit horology students to a great extent. On behalf of the Federation, I congratulate the VTC on developing this superb campus, and know that it will benefit our industries in the years to come. ■ ■

Mr Joseph CHU Kai To *Chairman, The Federation of Hong Kong Watch Trades & Industries Ltd*

■ ■ *Congratulations! The state-of-the-art complex is poised to become a powerhouse in nourishing local creative talents, and is set to lead design's global cause. May the future of design and innovation begin here.* ■ ■

Mr Billy LAU *Chairman, Hong Kong Jewellery & Jade Manufacturers Association*

■ ■ **On behalf of the Hong Kong Federation of Restaurants and Related Trades, I sincerely congratulate the VTC on the opening of its HKDI and IVE (Lee Wai Lee) mega-campus.** ■ ■

Mr Anthony LOK Kwok O *Chairman, Hong Kong Federation of Restaurants and Related Trades*

■ ■ The operation of the new campus marks the success of the two institutes in sustaining the professional education of our young generation and nurturing creative design talents. ■ ■

Mr Patrick CHEONG *Managing Director, Kimsion Plastic & Metal Manufacturing Ltd*

■ ■ *I take this opportunity to wish both institutions continual success in reaching new heights for tertiary education in Hong Kong!* ■ ■

Mr YIM Kai Ming *Chairperson, Hong Kong Institute of Marketing*

■ ■ The Hong Kong Jewelry Manufacturers' Association is grateful to be cooperating with these institutes to nurture jewellery talents to become the future pillars of our industry. ■ ■

Mr Sunny CHAN *Chairman, Hong Kong Jewelry Manufacturers' Association*

■ ■ I am confident that this infrastructure will contribute significantly towards nurturing creative talents in a new era of innovation, and building a better capacity for Hong Kong as it advances its international competitive edge. ■ ■

Ms Ada FUNG Yin Suen, JP *Juror, Jury of the International Architectural Design Competition for the HKDI*

■ ■ The two institutes are playing a pivotal role in furnishing our industries with much needed creativity and technical skills. ■ ■

Mr Stephen POON Chi Sing *Former President, Hong Kong Institute of Architects*

■ ■ *Conceived by a French architect, the new campuses of the HKDI and IVE (Lee Wai Lee) in Tiu Keng Leng hold in its own design, the mark of rich and fruitful cooperation between France and the VTC in the domain of education. We are glad and proud to have been involved in this partnership with you. Félicitations.* ■ ■

Mr Marc FONBAUSTIER *Consul General, The Consulate General of France in Hong Kong*

■ ■ **Congratulations on the opening of the new combined campus of the HKDI and IVE (Lee Wai Lee). With this all-round learning platform, students will be able to apply their knowledge well and contribute to society.** ■ ■

Mr HO Koon Wan *Executive Manager, Chow Tai Fook Jewellery Co. Ltd.*

■ ■ The new campus is not only a landmark for design professionals, but it also provides a modern, innovative and stimulating learning environment, which is particularly important for students in pursuit of excellence in design. ■ ■

Dr Paul HO Hok Keung *Chairman, Quantity Surveying Division of the Hong Kong Institute of Surveyors*

■ ■ **The winning proposal stood out from the others and impressed me as a structural engineer because it was the most innovative, if not the first of its kind, in terms of structural form.** ■ ■

Ir Professor Joseph MAK Yiu Ming *Member, Structural Division of the Hong Kong Institute of Engineers*

■ ■ I was proud to be involved with this challenging project from day one in mid 2005, through the initial conceptual study, the international architectural design competition, funding approval from the government and the site works to the handover to users in September 2010. ■ ■

Dr LEE Kin Wang *Head, Estates, Health and Safety Division, VTC*

■ ■ The operation of the new campus heralds a new era of dynamic and professional vocational education and training for nurturing creative young talents to match growing demand from the knowledge-based economy in Hong Kong. ■ ■

Mr NG Cheung Shing *Juror, Jury of the International Architectural Design Competition for the HKDI*

■ ■ *May the new campus be a learning platform that encourages the exchange of innovation and for nurturing the creativity of our younger generation.* ■ ■

Mr HO Sau Him *Member, Hong Kong Institute of Architects*

■ ■ **The operation of this campus marks the beginning of a new era in training the younger generation and nurturing creative design talents in Hong Kong. The Association wishes the two institutes continual success in the years ahead.** ■ ■

Mr Paul SO Wing Keung *President, Hong Kong Watch Manufacturers Association Limited*

THE BEST OF BOTH WORLDS

Located in Tiu Keng Leng, the Hong Kong Design Institute (HKDI) and IVE (Lee Wai Lee) mega-campus is an open and dynamic environment conducive to creative learning and innovative exploration. Based on the award winning design from the International Architectural Design Competition, the campus blends an open outlook with teaching and learning spaces that encourage interaction and the cross-fertilisation of ideas.



FOREWORD

The inauguration of the mega-campus of the Hong Kong Design Institute (HKDI) and the Hong Kong Institute of Vocational Education (Lee Wai Lee) marks a significant milestone in our journey of enhancing vocational education, and meeting the human capital needs of Hong Kong and the Region. Featuring iconic architectural design and excellent hardware, the adjoining campuses are vivid demonstration of the vibrancy of our vocational education, especially in nurturing creative talents.

The VTC has since 2005 embarked on a visionary initiative to plan and put in place a world class foundation design education to support the Government's policies in developing cultural and creative industries, and hence Hong Kong's economic development. Extensive and intensive efforts in the past five years have reaped very encouraging results and we have witnessed realisation of the initiative stage by stage. The HKDI campus is now well poised to spearhead innovations in design. Complementing our objective to create a cradle of manpower training for various sectors, the close proximity of the IVE (Lee Wai Lee) campus will further enhance synergy in learning and teaching by providing a stimulating environment for students and teachers from different academic disciplines to interact and collaborate.

As VTC Chairman, I am delighted with the cross-fertilisation that is already apparent from placing the two campuses together. Now that they are fully operational, some 7,000 students are benefiting from the multidisciplinary learning opportunities offered by both the HKDI and IVE (Lee Wai Lee). In future, these opportunities will cross the campuses, further enhancing a highly student-centred, interactive and creative environment.

I would like to express my deepest gratitude to all those who have made the establishment of this mega-campus a reality. This has been a visionary undertaking, and will surely advance both vocational education and design innovation in Hong Kong.

Dr The Hon Andrew LEUNG Kwan Yuen, GBS, JP

Chairman

Vocational Training Council

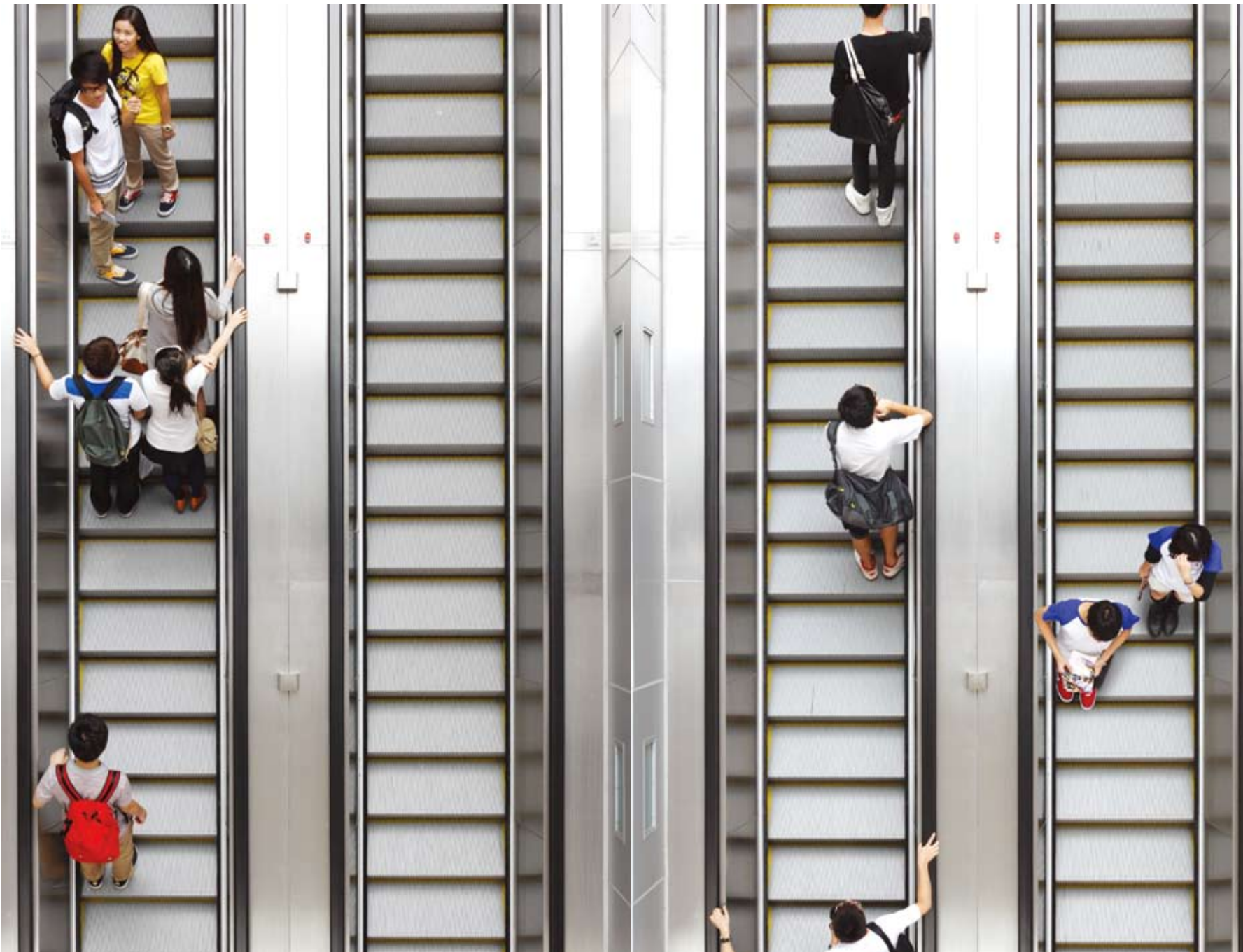


FOREWORD

For almost 30 years, the VTC has provided quality education to help young people acquire knowledge and professionalism. With the opening of the mega-campus of the Hong Kong Design Institute (HKDI) and the Hong Kong Institute of Vocational Education (Lee Wai Lee) in Tiu Keng Leng, our endeavour has reached a new height.

This commemorative book captures the development and key milestones of the mega-campus project. It records the unique design features of the campus and how they create a cutting-edge, highly interactive and creative teaching and learning environment. The book also allows us to celebrate this remarkable achievement with our key stakeholders, from students and teachers to business partners, industry professionals and advisors.

Common to both institutes on campus is a 'think and do' approach that fosters a passion for learning in students as they grow, develop, transform and shine. This unique



approach will be most evident to the public in the Design Boulevard, a piazza-like space that fully facilitates interactions among students, teachers, professionals and the community. With dedicated two exhibition areas, the campus will build on the VTC's rich design heritage and showcase the fresh talent and creativity of HKDI students.

Yet the new campus is far more than its physical environment. It creates an open atmosphere of thought, action and cooperation. Placing the HKDI and IVE (Lee Wai Lee) together creates synergy between the two in resource use and opportunities for students to broaden their mind and horizon.

Ultimately, the success of this campus will be in the achievements of its graduates. I am confident that our young people will acquire here the necessary competitive edge for them to excel in their chosen careers. They will support our industries and move Hong Kong forward.

Dr Carrie WILLIS, MBE, JP
Executive Director
Vocational Training Council

2004

The VTC begins planning the HKDI in tandem with the government's pledge to foster quality design education.

2005

Study tours to Europe and North America identify best practices in operating the Institute.

2006

The International Architectural Design Competition and International Logo Design Competition are launched to identify new campus outlook and brand identity for HKDI.

2007

HKDI admits its first cohort of students. Foundation works for the new campus commence.

2008

Superstructure of the new campus works commence.

2009

Topping out ceremony for the combined HKDI and IVE (Lee Wai Lee) mega-campus.

2010

Staff relocation to the new HKDI and IVE (Lee Wai Lee) mega-campus in April, first cohort of students arrives in September and official opening in November.

HKDI

2004

2005

2006

2007

2008

2009

2010

LWL

1979

1982

1999

2003

2010

1979

Founding of Lee Wai Lee Technical Institute with generous donation from industrialist Mr Lee Wai Lee.

1982

Construction of main building extension and annex commences.

1999

Lee Wai Lee Technical Institute joins two technical colleges and six other technical institutes to form the Hong Kong Institute of Vocational Education (IVE).

2003

Jewellery Industry Training Centre relocates from the Kwai Chung Training Centre Complex to IVE (Lee Wai Lee).

2010

Jewellery Industry Training Centre renames Pro-Act Training and Development Centre (Jewellery).

IVE (Lee Wai Lee) relocates to the new HKDI and IVE (Lee Wai Lee) mega-campus in Tiu Keng Leng.

THE HKDI CAMPUS SIGNIFIES NOT ONLY
SYNERGY, BUT ALSO CROSS-FERTILISATION
AND INTER-DISCIPLINARY COLLABORATION.



I am most pleased to see the commissioning of the new campuses of the Hong Kong Design Institute (HKDI) and Hong Kong Institutes of Vocational Education (IVE) (Lee Wai Lee).

Back in 2004, the Vocational Training Council already started working on the establishment of a Design Institute. After three years of dedicated effort, the HKDI formally launched the first batch of programmes in 2007. It brought together the rich heritage of design education and strengths of various design departments of IVE. At the same time, the VTC commenced construction of the campus of HKDI with the support of the Government and the Legislative Council. The hard work translates into the state-of-the-art campus we now see in Tiu Keng Leng. It provides a new nurturing ground to some 4,000 design students, giving another boost to the development of the cultural and creative industries, one of the six industries where Hong Kong enjoys clear advantages.

The white platform, a metaphorical presentation of “creativity”, floats in the air and connects all other parts of the campus. The enlightening design stimulates and inspires the minds of future designers. The architecture is conceived to offer maximum openness and permeability on the ground to connect with the urban grid and enhance interaction. Adjoined with the new campus of IVE (Lee Wai Lee), the HKDI campus signifies not only synergy, but also cross-fertilisation and inter-disciplinary collaboration. The new campuses will create a dynamic and interactive teaching and learning environment to our young talents.

On the opening ceremony of the new campuses of HKDI and IVE (Lee Wai Lee), I would like to extend my warmest congratulations to the VTC. I would also like to commend the remarkable contributions and achievements of the Council, its staff and students over the years. May I take this opportunity to wish VTC every success in its endeavours.

The Hon Michael SUEN Ming Yeung, GBS, JP
Secretary for Education
Education Bureau

I warmly congratulate the Hong Kong Design Institute and the Institute of Vocational Education (IVE) (Lee Wai Lee) on the opening of their new campuses.

I have been keenly following the progress of this project since its inception and I am most delighted to see all the hard work of both Institutes come to fruition.

I salute the project team, under the capable leadership of The Honourable Andrew Leung, Chairman of VTC, and Dr Carrie Willis, Executive Director of VTC, for their commitment, creativity and courage.

With few natural resources, Hong Kong has relied on the talent of its people to achieve rapid economic progress and drive its evolution from a once sleepy fishing village into a manufacturing centre, and more recently a platform for global business and finance. Today, Hong Kong is a dynamic and creative hub in Asia. All this could not have been achieved without great foresight and significant investment in preparing our local talent to meet the challenges of economic development.



HONG KONG IS A DYNAMIC AND CREATIVE HUB IN ASIA.

A world-class learning environment is at the core of Hong Kong's reputation as Asia's world city. The IVE (Lee Wai Lee) has been providing a comprehensive range of vocational education and training services tailored to the development and manpower needs of Hong Kong since 1979, whereas the HKDI established in 2007 is dedicated to nurturing designers for the fast-growing creative industries. With the state-of-the-art facilities provided by HKDI and the new IVE (Lee Wai Lee), the two campuses will turn a new page in the development of vocational education in Hong Kong, and will definitely give our talented youth more opportunities to hone their skills to meet the evolving demands of the economy.

I wish the Institutes, their staff and students every success.

Mr Michael WONG Wai Lun, JP
Director of Information Services
Information Services Department

FULLY SATISFIED THE FUNCTIONAL NEEDS OF ALL ITS USERS.

I am delighted to offer my warmest congratulation to the opening of the new campuses of the HKDI and IVE (Lee Wai Lee).

As a member of the Estate Committee of the VTC, I have the privilege of witnessing the entire development process, which signified the Council's firm commitment in promoting quality education with due emphasis on innovation and creativity.

The uniqueness of the architectural design calls for not only sophisticated engineering solutions and sustainable initiatives, but also meticulous project management. I am particularly impressed by the concerted effort of the Council, the consultants and the contractors in realising this built artifact which has fully satisfied the functional needs of all its users whilst creating a comfortable, vibrant learning environment to nurture creativity as well as enhancing interaction among teachers and students.

May I take this opportunity to wish the VTC every success in delivering quality design education in the years to come.

Mrs Marigold LAU LAI Siu Wan, JP

Director of Architectural Services

Architectural Services Department



HAVING LED THE PROJECT FROM THE OUTSET, I AM DELIGHTED TO SEE ITS SUCCESSFUL COMPLETION.

The commissioning of the Hong Kong Design Institute (HKDI) and IVE Lee Wai Lee (LWL) Campuses is the realisation of a shared vision, championed by strong leadership, underpinned by a rich heritage and unequivocal commitments of all involved. I have had the privilege of overseeing the execution of the project which aimed at the enhancement of both hardware and software to attain a world-class learning environment for foundation design education. In retrospect, this very meaningful task has bestowed both a challenging and rewarding experience on me.

The buildings should first strike the visitors as a visually rich space, with its central escalator drawing the gaze along lines, angles and planes. It is also a very pleasant sight to



see the staff and students enjoying their meetings at the Design Boulevard, an outdoor space complemented by an auditorium, exhibition areas, seminar rooms and leisure facilities. Moving up to the sky platform, the students will find the Learning Resources Centre with an impressive sea view to engage themselves in self study and group discussion. The new facilities will definitely provide the students with an open and dynamic environment conducive to creative learning, free thinking and innovative explorations.

Having led the project from the outset, I am delighted to see its successful completion. I would like to take this opportunity to express my very deep gratitude to the dedicated professional teams and all those who have contributed to bringing it from concept to reality.

Mrs LO LEE Oi Lin

Deputy Executive Director (Projects)
Vocational Training Council



ABOUT HKDI

HKDI is a leading and the largest design institution in Hong Kong. Established in 2007 after the careful and deliberate consolidation of existing design offerings from the Institute of Vocational Education, the HKDI now occupies a state-of-the-art campus in Tiu Keng Leng and offers programmes spanning across foundation studies, communication design and digital media, fashion and image design and product and interior design.

HKDI is committed to providing quality education to cultivate knowledge and professionalism in the new talents for the evolving creative industries.

The 'think and do' approach is adapted through contemporary curriculum and active collaborations with industry. HKDI emphasises teaching and learning experiences that provide first-hand knowledge and encourage active participation. In maintaining relevance today, the HKDI is nurturing a young generation who will help shape the design landscape of tomorrow.



Each of these unifying spaces encourages students to meet, interact, study and learn outside the classroom.

The VTC's drive to establish a world-class design school in Hong Kong has been a very rewarding process. Boosted by the government's shift to promoting cultural and creative industries in 2003, intense effort went into reshaping the Institute of Vocational Education's design discipline. The opening of the HKDI and IVE (Lee Wai Lee) mega-campus is an important milestone in realising VTC's vision of excellence in design education.

In moving from design offerings at separate campuses to a single institute with a purpose-built campus, we have done much more than simply consolidate resources. Rather, we have provided a space in which the individual disciplines from the HKDI and IVE (Lee Wai Lee) can interact in new ways.

We have deliberately pooled each discipline's workshops into managed clusters, ensuring staff interaction, the free communication of ideas between specialist areas and enhanced student learning. Students also benefit from the use of open space on campus. The four towers housing studios and workshop facilities are linked by common areas such as the rooftop garden and the Learning Resources Centre. Each of these unifying spaces encourages students to meet, interact, study and learn outside the classroom.

Design Boulevard also unites the campus and the community, offering a space to visit, take in exhibitions and take part in Hong Kong's shift towards being a creative hub for the region. Our industry partners are very enthusiastic about the new campus, acknowledging that it has already enhanced the profile of design locally. Now we can take on the world.

Mr Victor TSANG Chiu Hok
Principal
Hong Kong Design Institute

Mr Alex FUNG Shung Yu
Vice-Principal
Hong Kong Design Institute

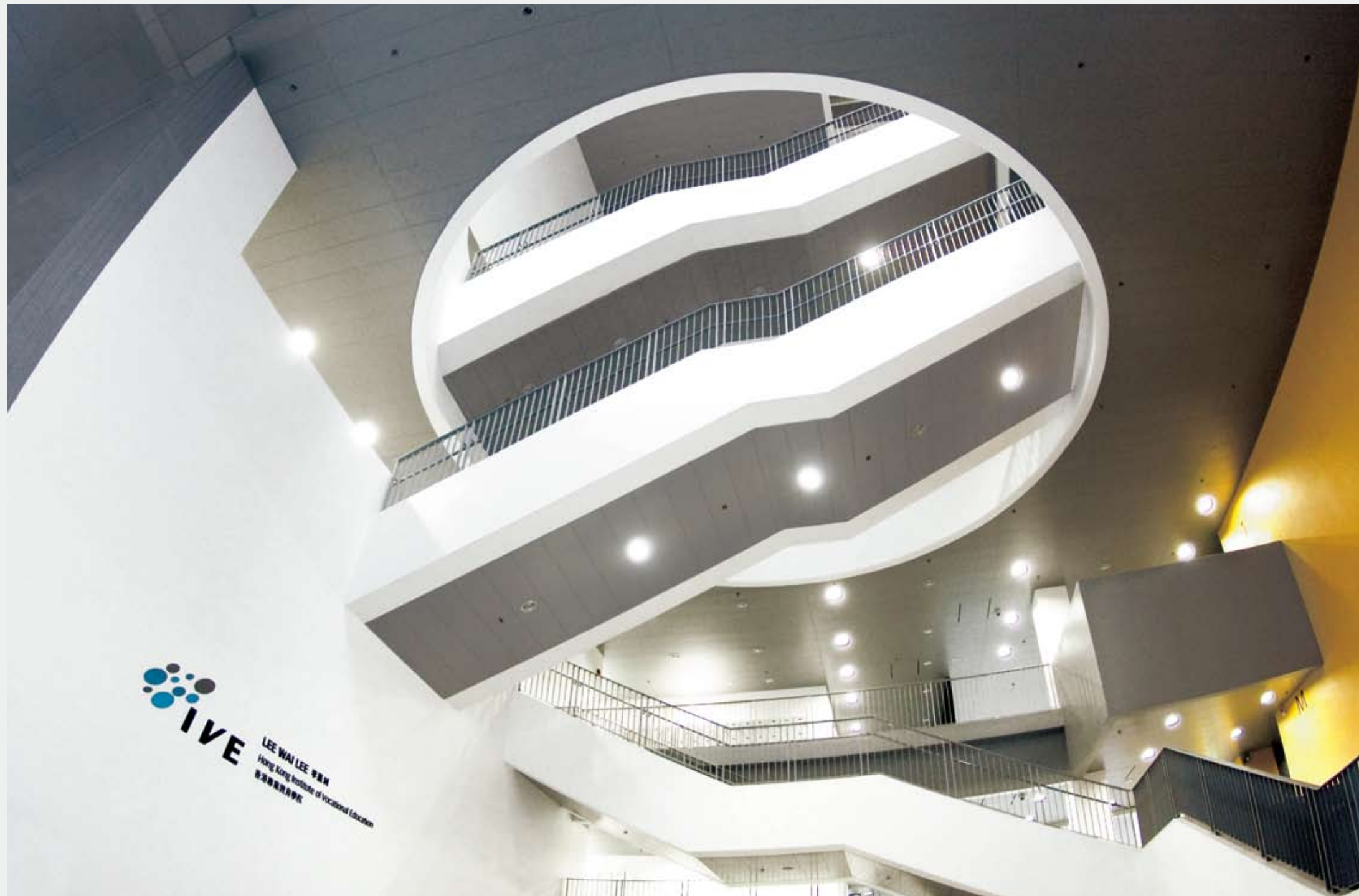
ABOUT IVE (LEE WAI LEE)

Founded in 1979 through a generous donation from the late industrialist Mr Lee Wai Lee, the IVE (Lee Wai Lee) provides high-quality vocational education in response to the rapidly changing needs of society. With strong ties to industry, IVE (Lee Wai Lee) designs its curriculum to meet growing market needs.

Now in its new campus in Tiu Keng Leng alongside the HKDI, IVE (Lee Wai Lee) is opening a fresh chapter in its development. State-of-the-art teaching and learning facilities are being complemented by a streamlined organisational structure, featuring departments of Business Administration, Multimedia and Internet Technology, and Engineering Management and Technology, and the Pro-Act Training and Development Centre (Jewellery).

Common with all IVE campuses, IVE (Lee Wai Lee) fosters a strong passion for hands-on learning in students. Yet it is unique amongst IVE campuses for offering courses in optics, ophthalmic dispensing, watch making and jewellery design. It is an important contributor to nurturing talents in these industries, producing highly competitive graduates with the skills needed for career success.





The future will bring more partnerships between students working together, partnerships amongst lecturers and collaboration with industry.

The VTC is an action-driven organisation - grasping opportunities in response to industry needs and creating favourable learning environments for students. We know that to move ahead we need to make things happen right now. In that sense, I see the HKDI and IVE (Lee Wai Lee) mega-campus as an opportunity to create and expand a true neighbourhood of learning.

This unique juxtaposition of two institutes provides a solid base for both to grow. From the IVE perspective, it is a classic case of synergy in which one plus one equals many more than two. On a practical level, shared facilities such as the Learning Resources Centre, Auditorium, exhibition venues and recreational facilities have expanded our range of resources. The pairing has also allowed us to create and realise a multidisciplinary vision through cross-disciplinary interaction.

Ultimately, our goal is to ensure that all students on campus have broader mindsets. The future will bring more partnerships between students working together, partnerships amongst lecturers and collaboration with industry. In a neighbourhood of learning, everyone benefits.

Mrs POON LEE Sau Lai

Principal

Hong Kong Institute of Vocational Education (Lee Wai Lee)

■ ■ My motive was straightforward: to make the HKDI a truly internationally recognised design school. ■ ■

Recalling the time in 2006 when the VTC first expressed its intention to organise an institution devoted to design education, and that a dedicated campus would be built to this end, I could not have been more excited to be on board to play a part in its birth.

Scenes of early stages of organisation recur in my mind like it was only yesterday – as Chairman of the Organising Committee of the HKDI Architectural Design Competition, I proposed and insisted that the competition be held to gather the best ideas from around the world. My motive was straightforward: to make the HKDI a truly internationally recognised design school. For that to happen, the winning design would have to be obtained through an open and fair competition, where the winning architect would be chosen for creativity and originality, irrespective of nationality, name or job references. That laid down the basics for the competition, which gathered 162 entries worldwide.

True to the founding values of the VTC, the selection was based on the principle that a practical yet contemporary campus should be built for HKDI students, where they could acquire skills and knowledge and exercise their creativity in a well-resourced platform. Coincidentally, the elevated level in the winning entry by Coldefy & Associates almost serves as a metaphor for this mission and purpose of the HKDI.

Thanks to VTC's pragmatic approach, the selection of the design and the construction of the new campus were completed within 2 years. This efficiency is living proof that a practical approach can contribute to a success that will be fundamental and most beneficial to Hong Kong.

While I would like to congratulate the HKDI on this very special occasion, I would also like to wish its students every success in the years to come. Perhaps most essentially, I hope that they carry forward the philosophy of the HKDI.

Mr Barrie HO Chow Lai

Chairman

Organising Committee of the International Architectural Design Competition for the HKDI



■ ■ This landmark facility will enhance
Hong Kong's creative talents. ■ ■

I have been involved with the HKDI since 2006 when I was appointed chairman of the design jury charged with selecting the architectural team via an international competition. Later I became chairman of the project management steering committee that oversaw the construction.

It has been a pleasure and a privilege to see this wonderful facility take shape, and I would like to congratulate all of the VTC staff, design consultants and contractors who have made that happen.

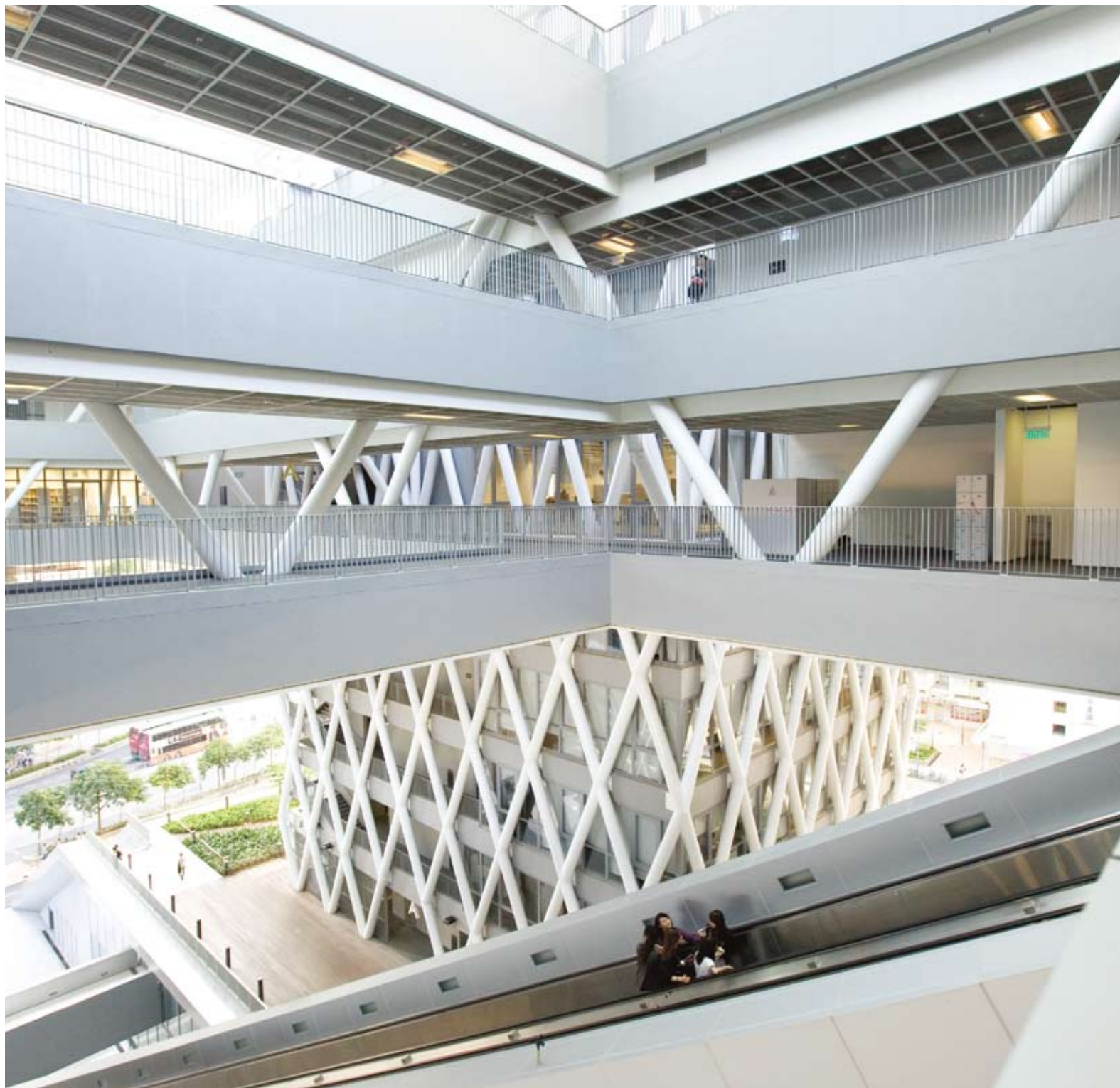
I am confident that this landmark facility will enhance Hong Kong's creative talents for many years to come.

Mr Martin N HADAWAY

Chairman

Jury of the International Architectural Design Competition for the HKDI





■ ■ In any education institute the only certainty is change. The more open and flexible its design, the better the institute will become. ■ ■

Flexibility always provides room for growth. Invited early in the process as a juror for the truly open, international competition that decided the final shape of the HKDI campus, I not only helped in the formation of the jury but eventually left my previous position and joined the HKDI as Head of Product and Interior Design. In a sense, my involvement grew with the project, and the combined HKDI and IVE (Lee Wai Lee) mega-campus is now very much my element.

What still strikes me about the design – both as put forward by Coldefy and Associates and in its final form – is its clarity. As an architect I see a very rational, very clear structure that has a good logic. It sits somewhere between a campus and a building, offering a certain specificity and then something that is truly flexible.

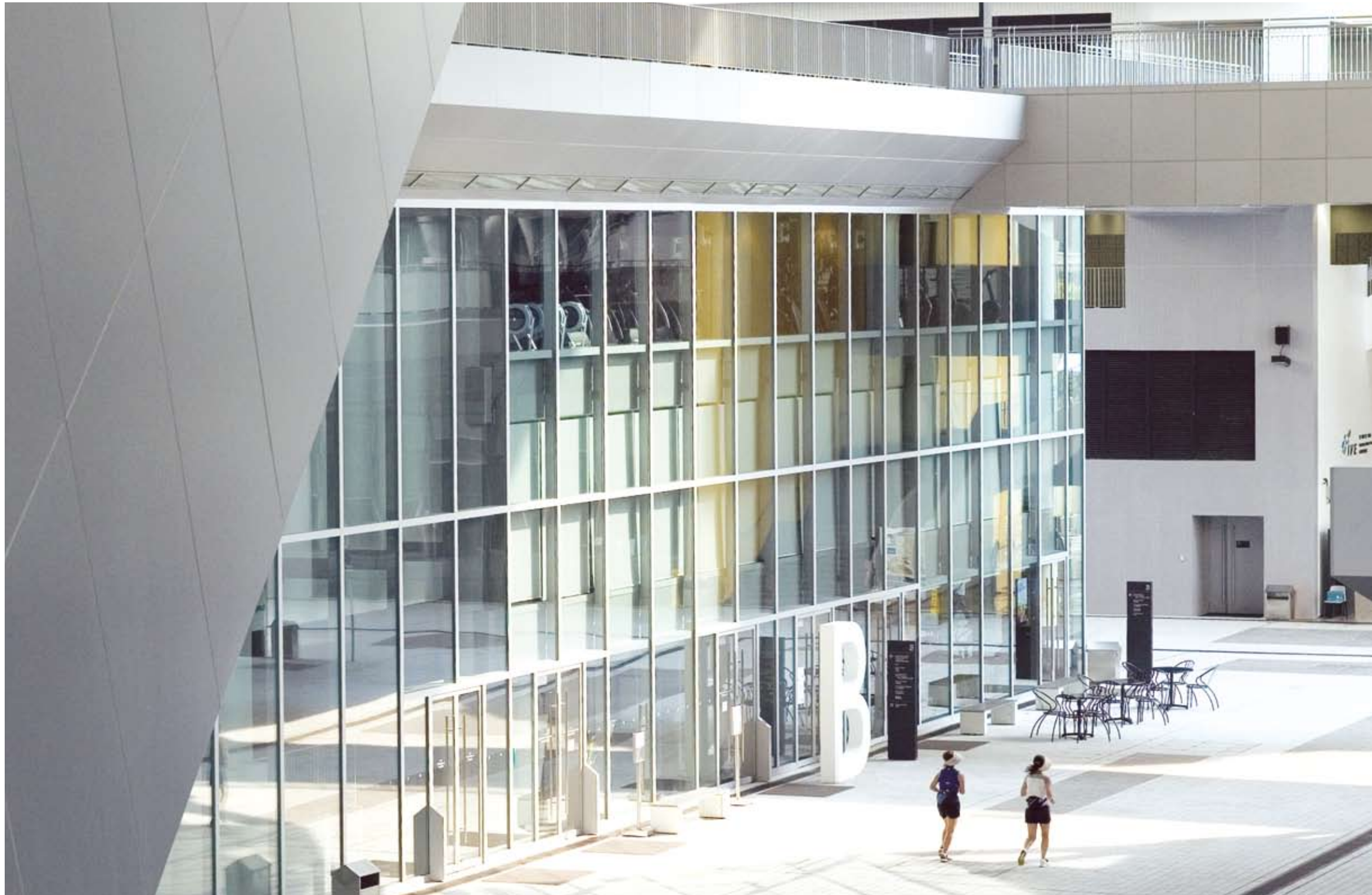
The roof garden above and Design Boulevard below offer public and semi-public spaces for the near-by community and the student body, these spaces are filled with possibility, the four towers and the sky platform each houses specific functions have more of a settled purpose. Together they provide a sense of identity that is dynamic rather than fixed, with room for further development and growth.

In any education institute the only certainty is change. The more open and flexible its design, the better the institute will become, primarily because it can be shaped and reshaped to serve its students. HKDI students are involved in an ongoing project of learning through doing. They now have tailor-made space for thought and action – the rest is up to them.

Mr Leslie LU Lam

Juror

Jury of the International Architectural Design Competition for the HKDI



■ ■ A benchmark for high-standard
educational institutions in the region. ■ ■

It was my honour to represent the Hong Kong Institute of Architects, the co-organiser of the international design competition for this new campus, and participate in the technical assessment of submitted designs. The competition drew welcome attention from design professions all over the world, with a huge diversity of design concepts contributed.

I would like to congratulate the HKDI and IVE (Lee Wai Lee) for their years of effort in creating such a magnificent campus environment. It will no doubt become an important landmark in the area, and a benchmark for high-standard educational institutions in the region.

Mr TSANG Man Bui

Chairman

Technical Committee of the International Architectural Design Competition for the HKDI

■ Hong Kong now has a world-class design school that will produce internationally competitive graduates. ■

As former Chairman of the VTC Estates Committee, the HKDI and IVE (Lee Wai Lee) mega-campus is close to my heart. Having overseen the building and construction elements of the campus project since 2004, I am now very much looking forward to a future filled with promise.

Much to the credit of architects Coldefy and Associates, and to the dedication of all involved in ensuring the design would be realised intact, we now have a landmark in Tiu Keng Leng, a true icon of the VTC. We envisaged a transparent, outward looking campus capable of satisfying student needs. We wanted to create a sense of movement in different directions, of flows of ideas that overlap to provoke thought, action and reaction. This was particularly important as we considered how the two campuses would come together to complement each other.

From the design perspective alone we have already achieved a great deal. Hong Kong now has a world-class design school that will produce internationally competitive graduates. This will be crucial in the coming years as low-cost manufacturing shifts away from mainland China and Hong Kong enterprises again adapt to a changing economic environment. As they move up the value chain, local enterprises will incorporate increasingly more design elements into their products, and graduates from the HKDI and IVE (Lee Wai Lee) will play an intimate role in that process.

From inception to completion, the goal was always just that – to create an atmosphere that would produce graduates to serve the Hong Kong community, whether here or overseas, with thoughtfulness, creativity and innovation.

Mr Clement CHEN Cheng Jen, BBS, JP
Former Chairman
VTC Estates Committee





Nurturing the creative and innovative minds of our young generations to ensure they are well equipped to ride through the ever-changing, dynamic social economic challenges on the local and global fronts has always been a daunting yet momentous task for our design educationalists and professionals in Hong Kong.

The opening of the new HKDI and IVE (Lee Wai Lee) mega-campus in Tiu Keng Leng is a milestone in the development of design education in Hong Kong. To mark this special occasion, I would like to send my sincere congratulations to the VTC.

Investment in design and creative education is a key path towards Hong Kong becoming a design hub in Asia and sustaining its long-term development amid burgeoning competition from neighbouring economies such as Singapore, South Korea and Taiwan, where design education has become a nationwide policy to drive sustainable economic growth.

The HKDI provides world-class design education to groom and nurture Hong Kong's creative talents and prepare them to embark on successful design careers. Its contributions to our city's human capital development in the design and creative industries are far reaching and have been widely lauded by our community. The state-of-the-art facilities at the new campus will definitely create a learning environment conducive to the successful cultivation of future designers.

The Hon Victor LO Chung Wing, GBS, JP
Chairman
Hong Kong Design Centre

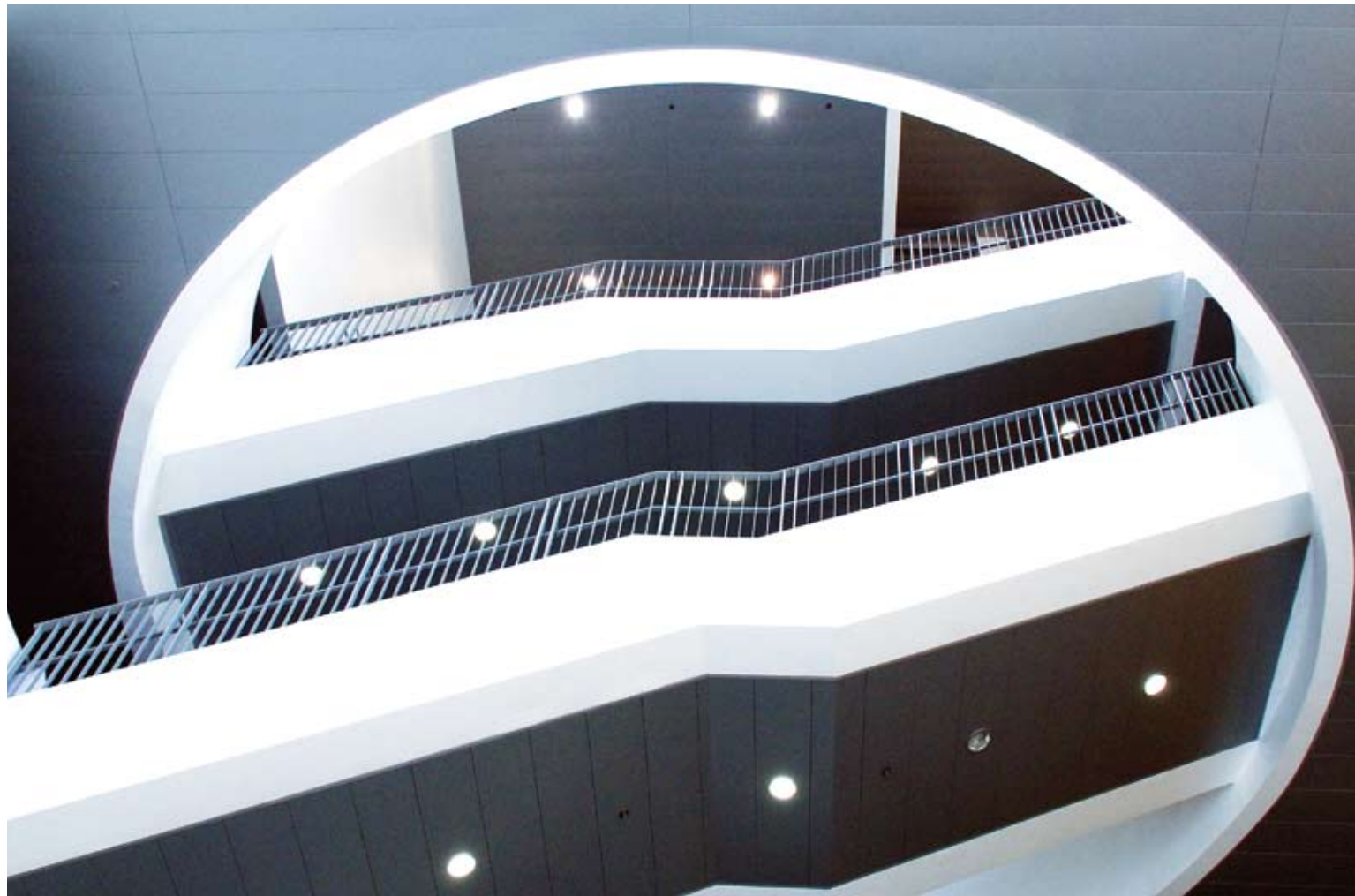
■ Investment in design and creative education is a key path towards Hong Kong becoming a design hub in Asia. ■



It provokes the
inspiration whenever
every corner in the
campuses comes
into our sight!



■ ■ I am sure that this state-of-the-art base will nurture even more quality graduates with outstanding career achievements. ■ ■

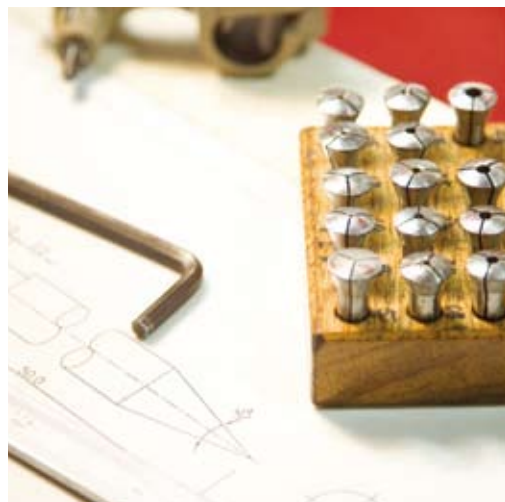


As Managing Director of the Lee Wai Lee Foundation Fund, I am delighted to see the Institute of Vocational Education (Lee Wai Lee) relocated and reinvigorated in such an impressive campus. This new campus, especially through its close integration with the HKDI, is a fitting continuation of Mr Lee Wai Lee's original vision for vocational education.

Having studied at the old campus in Kowloon Tong, I have a particular emotional attachment to the Institute. I feel very proud of this new campus as it signals the advancement of vocational education in Hong Kong. It is an improved learning environment for IVE (Lee Wai Lee) students, providing better facilities and many more resources in combination with the HKDI. The campus will surely enhance the established reputation of Lee Wai Lee in education. We at the Lee Wai Lee Foundation Fund are keen to provide further support to the Institute whenever it is needed.

As with all elements of education, the most important aspect of the HKDI and IVE (Lee Wai Lee) mega-campus is its students. I am sure that this state-of-the-art base will nurture even more quality graduates with outstanding career achievements. On behalf of the Lee Wai Lee Foundation Fund I congratulate the VTC and everyone involved in making this mega-campus project a success.

Mr Simon HUI Cho Yan
Managing Director
Lee Wai Lee Foundation Fund



■ ■ Stimulus for the younger generation to develop their creativity and interest in technical study. ■ ■

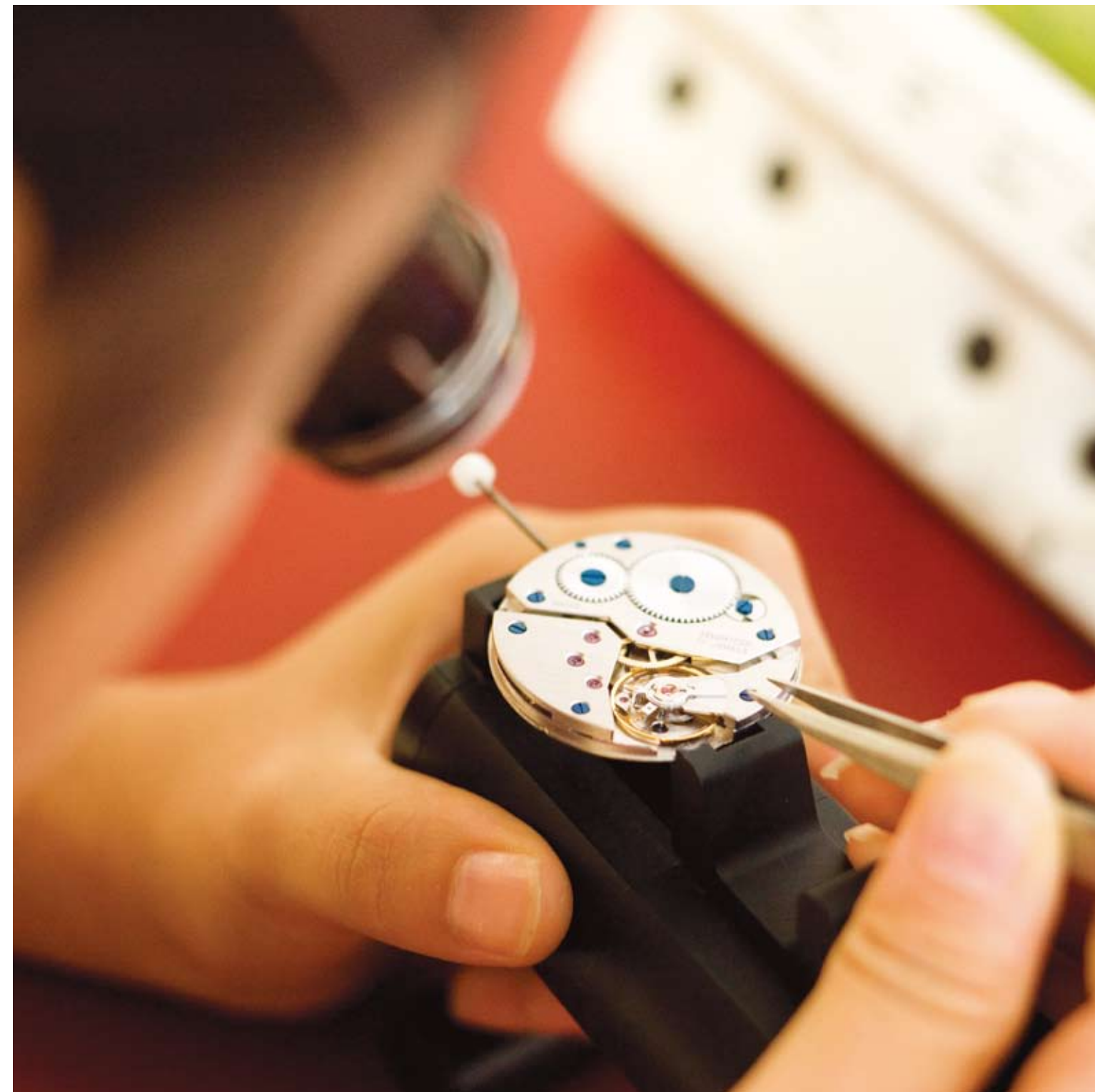
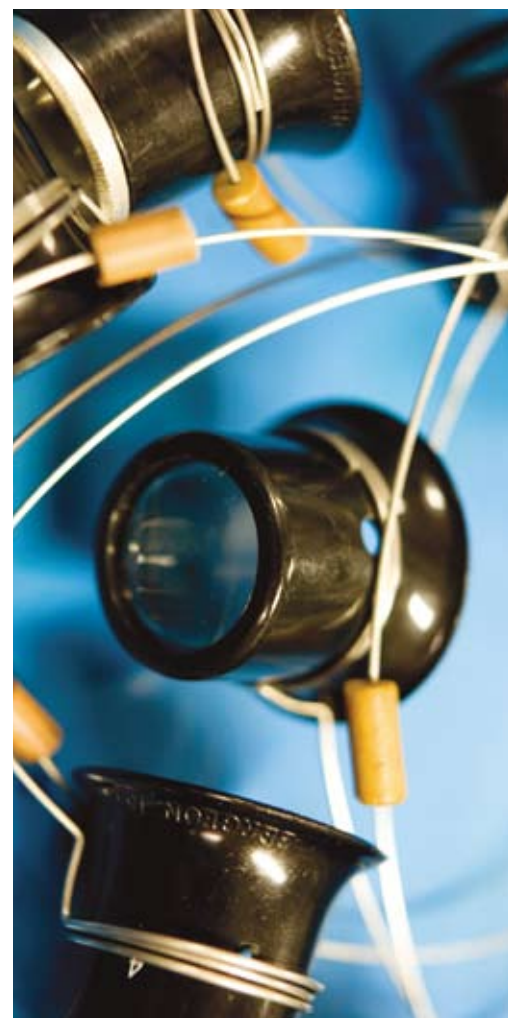
When the Lee Wai Lee Technical Institute officially opened in July 1980, I attended the auspicious event. The late Mr Lee's intention in providing his generous donation was crystal-clear: to offer technical education to students in need, particularly underprivileged youth, and to serve as a stimulus for the younger generation to develop their creativity and interest in technical study. On the occasion of today's opening of the HKDI and IVE (Lee Wai Lee) mega-campus, I am extremely excited to witness how it is fulfilling Mr Lee's dream.

I salute the administration and management of the two institutes for their strenuous efforts, selfless contributions and valuable time taken to realise this accomplishment. My sincere congratulations go to you all.

Dr Samson SUN, DCSc, MBE, JP

Permanent Honorary President

The Federation of Hong Kong Watch Trades & Industries Ltd





■ The rise or fall of these creative industries
will rely greatly on the cultivation of talents. ■

I firmly believe that Hong Kong has an urgent need to develop creative industries that will provide young people with more value-added employment opportunities. To this end, I moved a motion of “Promoting the Development of Local Creative Industries” in LegCo during 2009. Nowadays, with the prevalence of broadband Internet access, mobile phones, WiFi and other IT applications, the development of digital creative industries will not only break through the limitations of our local market, but will also inspire the equal participation of all in the Web 2.0 era.

The rise or fall of these creative industries will rely greatly on the cultivation of talents. I believe that the opening of the new campuses of the HKDI and IVE (Lee Wai Lee) will do more than contribute to the nurturing of creative young talents. It will also, and most importantly, promote the sustainable development of local creative industries.

Ir Dr Hon Samson TAM Wai Ho, JP
Member
Legislative Council (Information Technology Functional Constituency)





■ ■ The combined campuses will help the
two institutes contribute even more. ■ ■

I wish to extend my warmest congratulations on the opening of the new campuses of the HKDI and IVE (Lee Wai Lee) in Tiu Keng Leng.

Since its establishment in 2007, the HKDI has provided quality education and training to underpin the growth of creative industries in Hong Kong. Its new purpose-built campus will prove to be a great boon for the training of more local creative talents. The IVE (Lee Wai Lee) is equally significant in that it is the only IVE campus offering programmes in optics, ophthalmic dispensing, watch making and jewellery design and technology, thus playing an important role in providing quality training in those areas.

The combined campuses will, I believe, help the two institutes contribute even more towards developing Hong Kong's quality competitiveness in creative industries.

Mr Hilton CHEONG Leen, CBE, JP

Honorary Life President

Hong Kong Watch Manufacturers Association Limited



A high-angle, top-down photograph of a group of young people, likely students, dancing on a wooden floor. They are captured in various dynamic poses, with arms raised and bodies in motion. The floor is made of light-colored wooden planks. The overall atmosphere is energetic and lively.

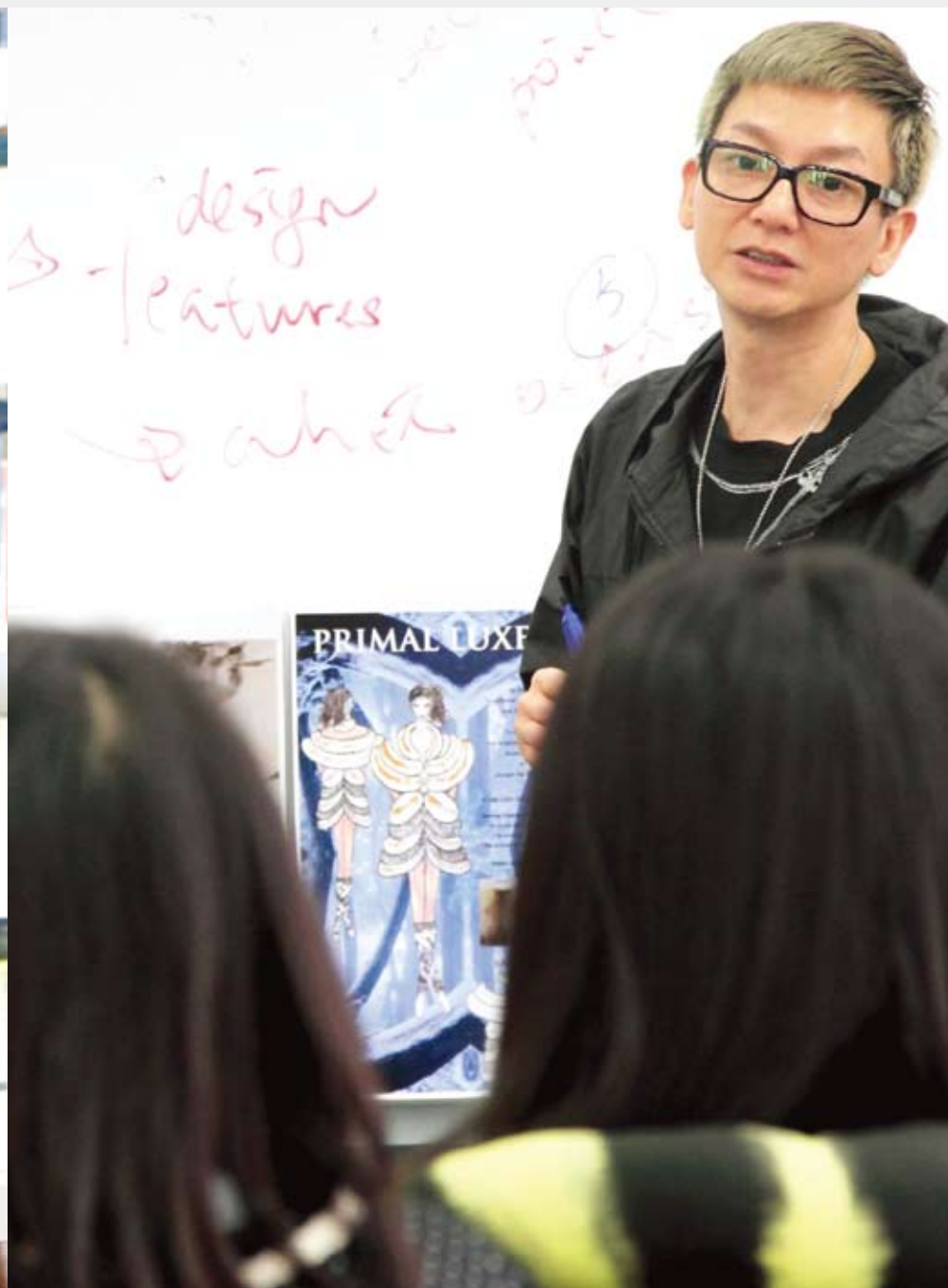
DYNAMIC LEARNING ENVIRONMENT

TEACHING EVERYWHERE

The HKDI and IVE (Lee Wai Lee) mega-campus was designed to provide a dynamic environment for teaching and learning. Following a philosophy of encouraging creativity in action, the campus fosters synergy between its two resident institutes, embracing the cohesiveness of Chinese culture and openness of Western culture. The layout encourages responsiveness to the community and the wider world. Wanting to create a space in which talent could be nurtured with passion and learning could be fun, the VTC believed that the campus should be optimised to allow for reconfigurations as a distinct campus identity emerges. The resultant amalgam of Podium, towers and Sky Platform is distinct in its current functions but flexible enough to lead Hong Kong tertiary education into a new era of achievement.



LEARNING EVERYTIME



DESIGN CONCEPT THE WHITE SHEET

A metaphor for creativity right before it blossoms, The White Sheet expresses this project's intentions: to bring together and present the future design institute's multidisciplinary and objectives.

In concrete, glass and steel, its radical, light and transparent architecture encourages reflection on the combination of multiple and opposite situations: introversion and extroversion, modesty and exposition, exclusivity and publicity, micro and macro city, classicism and experimentation. Each functional element, first decomposed, merges, interpenetrates or isolates itself and allows the project to be immediately read from the exterior.

The building base, a giant urban lounge, encourages meeting and exchange, making use of interior and exterior green spaces and views of the scenery. The podium, whose gentle slope rises seven metres above King Ling Road, was conceived as a landscaped extrusion of the ground, directly connected to the urban environment over two levels, both a common space and outer gallery. Open but sheltered by the upper platform, it can accommodate many events.

Covered in white silk-screened glass, the pristine and minimal volume of the "aerial city" platform floats above the towers. It brings the Learning Resources Centre, school administration and different community areas together. Its landscaped roof is accessible to all students and staff.

The towers are the soul of the Institute, its structure and its vertical distribution. They express the diversity and specificity of the disciplines represented therein.

The entire composition created by interpenetration between the interlinked elements defines the Institute as a timeless building, and reveals its objectives of synergy, a state-of-the-art school, publicity and interactivity. It is bound to become an important symbol in Hong Kong.

Mr Thomas COLDEFY

Architect

Coldefy and Associates Architectures Urbanists



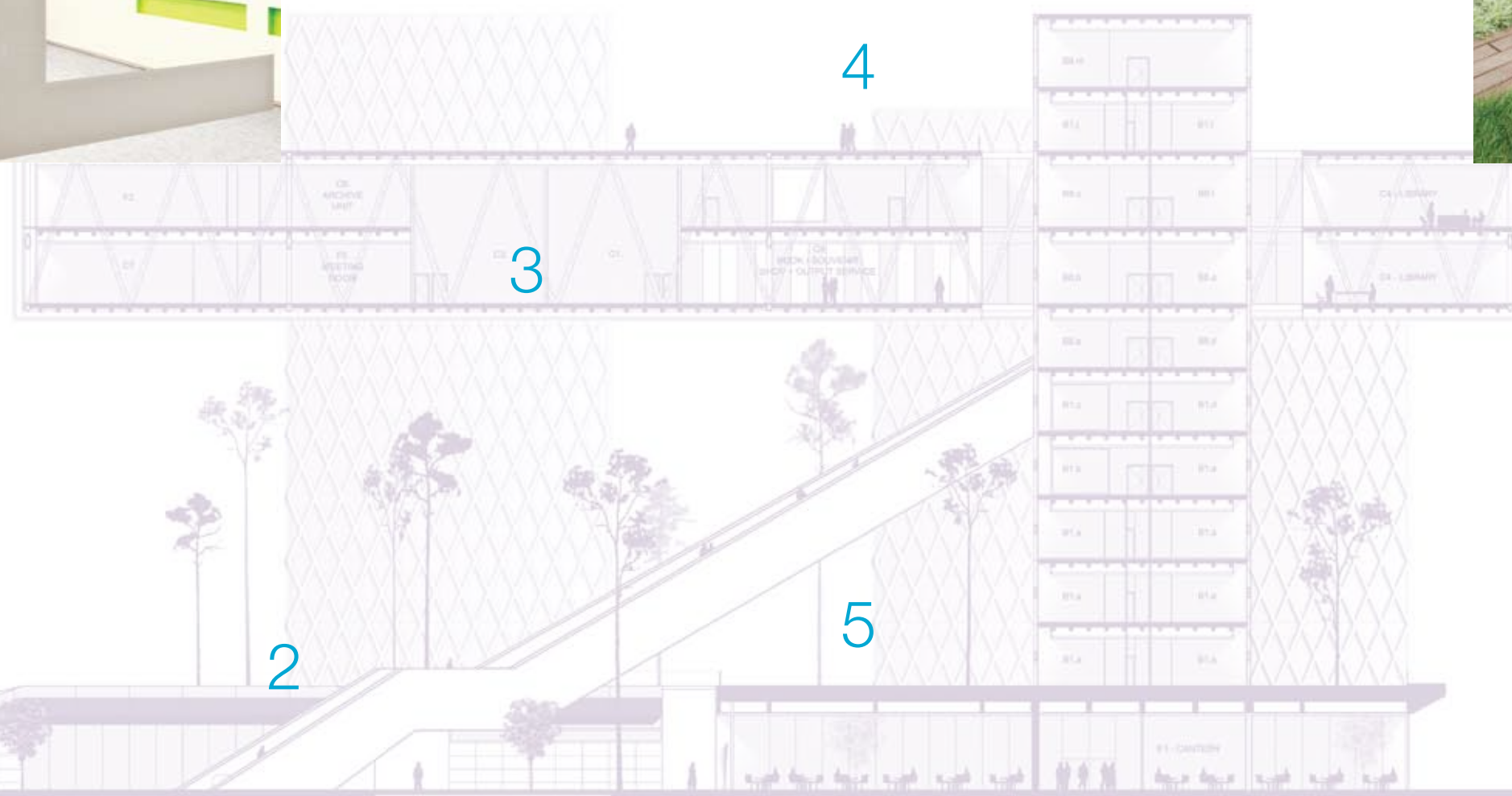
1 DESIGN
BOULEVARD

2 ESCALATOR

3 SKY
PLATFORM

4 ROOF
GARDEN

5 FOUR
TOWERS



SKY PLATFORM

The HKDI and IVE (Lee Wai Lee) mega-campus is an architectural icon in Hong Kong. Based on an award winning design, the campus rises from a green landscaped Podium above King Ling Road. The open space of Design Boulevard entices visitors, and the glazed façades of the four towers, our 'pillars of learning', accentuate the feeling that the two-level Sky Platform is floating on air. Together, these external features work to create an open and dynamic environment for teaching and learning.



ESCALATOR

A unique feature of the main structure, this is the longest outdoor suspended escalator in Hong Kong. For 67 metres it draws students and staff up into the learning and collaboration communities of the Sky Platform.

DESIGN BOULEVARD

Completing the Podium, Design Boulevard invites the public into the campus. Stretching out over 125 metres, this open area offers access to the Auditorium, exhibition spaces and common facilities. Designed as a 'breathing space' for the campus, Design Boulevard evokes a feeling of café society, with space for student activities and the interaction of creative minds.



AUDITORIUM

The VTC Auditorium accommodates over 700 people, with specially design acoustics to enhance performances, conferences and other gatherings. Available for hire, this 10,366 square feet venue with disabled access will be a focal point of the HKDI's interaction with the community.



EXHIBITION SPACES

The HKDI Gallery and d-Mart provide a combined exhibition space of up to 13,993 square feet. Open to the public and intended to showcase the breadth of design generated at or related to the HKDI, the two spaces will host exhibitions, trade and industry related events and displays of student work.

As the first gallery dedicated to the advancement of design culture in Hong Kong, the HKDI Gallery will draw the public into exhibitions of the more formal, prestigious research-orientated aspects of art and design. The reconfigurable d-Mart will focus on presenting design work with more commercial themes.



Steve Jobs, the CEO of Apple, once said that “innovation distinguishes between a leader and a follower.” With the HKDI’s innovative mission in design education, together with its quality teaching team and advanced new campus, I deeply believe that it will nurture more design elite and further promote Hong Kong designs in the future.

Charlie Kayi

Founder and Designer, Delication
HKDI Alumnus, HD in Timepiece Design and Branding



PORTAL OF KNOWLEDGE

Here within the HKDI's fantastic new and impressive buildings, the structure and circulation spaces are vivid and powerful. They allow students to take inspiration from the physical campus and to design interventions in relation to the physical situations and their own collaborative values incited by our Installation Project.

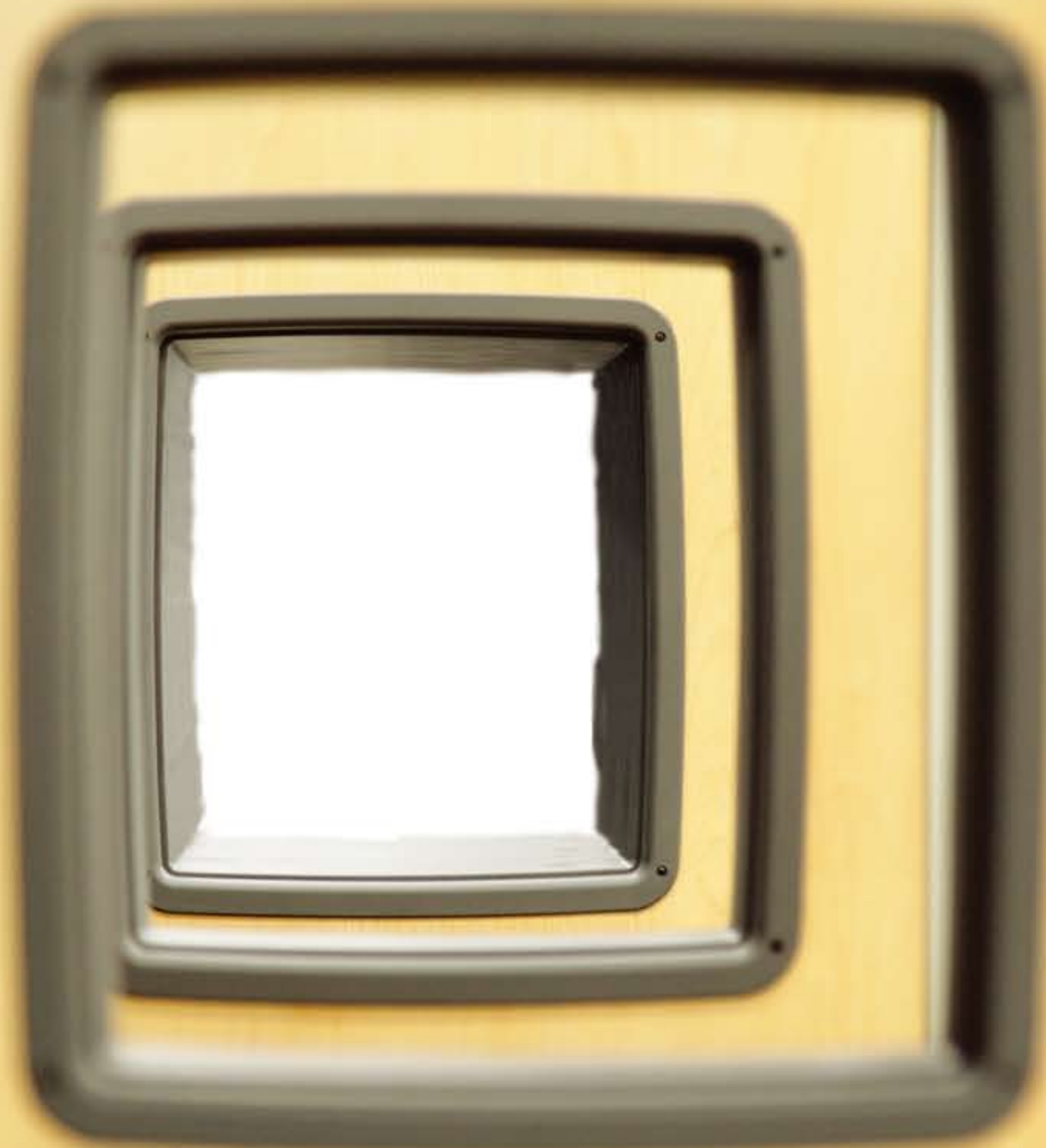
Sheila Levrant de Bretteville

Street Professor

Yale University School of Art

Visiting Fellow

Hong Kong Design Institute





LEARNING RESOURCES CENTRE

Far more than just a library, the Learning Resources Centre is a place of reflection and interaction, where students are encouraged to discuss what they have been learning openly. Housing over 75,000 books, periodicals and audio-visual material, the Centre also includes Zone 24, an always-open area in which students can study, hold discussions and collaborate on projects.





FACILITIES

Lifestyle is a source of creativity. Surrounded by recreational facilities which make the students relax, that is why they are full of thoughtful ideas.

ROOF GARDEN

Nestled atop the Sky Platform, the Roof Garden is an open space of wooden decking that allows individuals to sit and reflect, share ideas or just relax. It is an ideal meeting place for students and staff of both the HKDI and IVE (Lee Wai Lee).





■ ■ ■
The new mega-campus
embodies the spirit of art.
Its unique exterior will
become a landmark of
creativity in Hong Kong. ■ ■ ■

Wong Yee Lee
IVE (Lee Wai Lee) student



■ ■ ■
For me, an important feature
of the mega-campus is the
combination of space and
sunlight. It is so refreshing
to have sunlit areas to move
about in and expand our
sense of what education
can be. The recreational
facilities, like the swimming
pool and fitness centre are
also outstanding. ■ ■ ■

Ng Kam Fung
IVE (Lee Wai Lee) student



■ ■ ■
What a great space in
which we can learn,
grow, be inspired and
motivate each other! ■ ■ ■

Cham Hin Yeung
HKDI student



■ ■ ■
The thoughtful provision
of state-of-the-art
equipment and learning
spaces will definitely
benefit our years of
study here. ■ ■ ■

Ho Wing Yan
HKDI student

■ ■ ■
Having a world-class
campus was supposed
to be an unreachable
goal, but we have
it here and now.
This is not just good,
it is excellent! ■ ■ ■

Chiu Hon To
IVE (Lee Wai Lee) student



■ ■ ■
Fittingly for a place that
fosters creativity and
innovation, the new mega-
campus has a unique design.
The outdoor escalator takes
us to a higher level of
learning, and the openness
provides us more space, both
mentally and physically. ■ ■ ■

Chow Kai Yee
HKDI student

■ ■ ■
We couldn't have
hoped for anything
more – a cozy
environment, delicious
food, advanced
equipment and
dedicated teachers! ■ ■ ■

Cheng Ka Shun
IVE (Lee Wai Lee) student





I am very happy to be one of the first students to benefit from the new mega-campus. Bravo, I say! I am sure the experience will be superb. 📺

Lee Lai Lai
HKDI student



Moving from good to great should be the goal of any institute. With this new mega-campus, both the HKDI and the IVE (Lee Wai Lee) have moved past that to extraordinary! 📺

Mok Pui Lam
HKDI student



With its unique external features and advanced facilities the new mega-campus really stands out. My friends from other IVE campuses envy my school life here. 📺

Wong Man Tung
IVE (Lee Wai Lee) student

SPECIAL THANKS

The HKDI and IVE (Lee Wai Lee) would like to express our heartfelt thanks to the following organisations and individuals to their support and participation to the mega-campus project:

THE GOVERNMENT OF THE HONG KONG SPECIAL ADMINISTRATION REGION

The Hon Michael SUEN Ming Yuen, GBS, JP, Secretary for Education

Mr Michael WONG Wai Lun, Director of Information Services

Mrs Marigold LAU LAI Siu Wan, JP, Director of Architectural Services

INTERNATIONAL ARCHITECTURAL DESIGN COMPETITION FOR THE HKDI

ORGANISING COMMITTEE

Chairman

Mr Barrie HO Chow Lai, Member, VTC Design Institute Advisory Board

Members

The Hong Kong Institute of Architects

Mr Stephen POON Chi Sing, Former President

Mr HO Sau Him, Member

Mr Derek MOK Chi Yuen, Member, Competition Committee

Mr Matthew WONG Ming Tak, Member, Competition Committee

Architectural Services Department

Mrs Olivia NG Tin Wai, Senior Architect

Vocational Training Council

Mrs LO LEE Oi Lin, Deputy Executive Director (Projects)

Mr Ben MAU Kim Fai, Head, Department of Communication Design and Digital Media, HKDI

Dr LEE Kin Wang, Head, Estates, Health and Safety Division

Ms Leah CHUNG Chi Ching, Head, External Relations Office

Mr Joseph LUK Wui Fung, Project Manager, Estates, Health and Safety Division

Mr Nicholas TSE Kwong Wa, Facilities Management Officer II, Estates, Health and Safety Division

Mr Geddy LEE Tak Wai, Lecturer, Department of Engineering, IVE (Tsing Yi)

PROFESSIONAL ADVISER

The Professional Adviser to the Competition, nominated and approved by the Promoter and the Sponsor, is Mr Joseph KWAN, MH, Dip Arch (QUT), MSc(Surrey), FRAIA, RIBA, FHKIA, Assoc, AIA

INTERNATIONAL ARCHITECTURAL DESIGN COMPETITION FOR THE HKDI

THE JURY

Chairman

Mr Martin N HADAWAY, Member, VTC Estates Committee

Jurors

Mr Richard MEIER, International Renowned Architect, USA

Professor ZHENG Shiling, School of Architecture and Urban Planning, Tongji University, Shanghai, China

Mr Leslie LU Lam, Head, Department of Product and Interior Design, HKDI

Mr Rocco YIM Sen Kee, International Renowned Architect, Hong Kong

Mr NG Cheung Shing, Former Member, VTC Council

Mr Barrie HO Chow Lai, Member, VTC Design Institute Advisory Board

Reserve Jurors

Ms Ada FUNG Yin Suen, JP, Deputy Director (Development and Construction), Hong Kong Housing Department

Mr Stephen POON Sing Chi, Former President, The Hong Kong Institute of Architects

TECHNICAL COMMITTEE

Chairman

Mr TSANG Man Biu, Representative, The Hong Kong Institute of Architects

Members

Ir Samuel LIP Kwok Pui, Member, Building Services Division of the Hong Kong Institute of Engineers

Ir Matthew CHEUNG Man Huen, Member, Environmental Division of the Hong Kong Institute of Engineers

Ir Joseph MAK Yiu Wing, Member, Structural Division of the Hong Kong Institute of Engineers

Dr Paul HO Hok Keung, Chairman, Quantity Surveying Division of the Hong Kong Institute of Surveyors

SUPPORTERS

The Hong Kong Institute of Architects

The Hong Kong Institution of Engineers

The Hong Kong Institute of Surveyors

Sai Kung District Council

Sai Kung District Office

P&T Architects and Engineers Limited

Parsons Brinkerhoff (Asia) Limited

Widnell Ltd

Brian E Rawling & Associates Limited

Ove Arup & Partner Hong Kong Limited

Penta-Ocean Construction Co Limited

China Resources Construction Co Limited

Pyrofoe Engineers Limited

ThyssenKrupp Elevator (HK) Limited

Members of VTC Group VTC 機構成員



HKDI and IVE (LEE WAI LEE)

3 King Ling Road, Tseung Kwan O, NT, HK

Tel : (852) 3928 2000

Fax : (852) 3928 2024

Email : hkdi@vtc.edu.hk

ivelwl@vtc.edu.hk

Website : <http://www.hkdi.edu.hk>

<http://www.vtc.edu.hk/ive/lwl/>

NG ANIMATION IMAGINATION HDTV PHOTOGRAPHY INTERACTIVE IMAGING FILM & TV
A JEWELLERY WATCH PRODUCT PACKAGING ANIMATION IMAGINATION HDTV PHOTOG-
RAPHIC FASHION CREATIVITY MULTIMEDIA JEWELLERY WATCH PRODUCT PACKAGING
ELLERY WATCH PRODUCT PACKAGING ANIMATION IMAGINATION HDTV PHOTOGRAPHY
TIVE IMAGING FILM & TV STUDIO INSPIRING CREATIVITY CAD AUDIO GRAPHICGRAPHIC
ION IMAGINATION HDTV PHOTOGRAPHY INTERACTIVE IMAGING FILM & TV STUDIO IN-
LERY WATCH PRODUCT PACKAGING ANIMATION IMAGINATION HDTV PHOTOGRAPHY
FASHION CREATIVITY MULTIMEDIA JEWELLERY WATCH PRODUCT PACKAGING ANIMA-
RY WATCH PRODUCT PACKAGING ANIMATION IMAGINATION HDTV PHOTOGRAPHY IN-
IVE IMAGING FILM & TV STUDIO INSPIRING CREATIVITY CAD AUDIO GRAPHICGRAPHIC
ION IMAGINATION HDTV PHOTOGRAPHY INTERACTIVE IMAGING FILM & TV STUDIO IN-
ERY WATCH PRODUCT PACKAGING ANIMATION IMAGINATION HDTV PHOTOGRAPHY IN-
SHION CREATIVITY MULTIMEDIA JEWELLERY WATCH PRODUCT PACKAGING ANIMATION
ATCH PRODUCT PACKAGING ANIMATION IMAGINATION HDTV PHOTOGRAPHY INTERAC-
GING FILM & TV STUDIO INSPIRING CREATIVITY CAD AUDIO GRAPHICGRAPHIC FASHION
GINATION HDTV PHOTOGRAPHY INTERACTIVE IMAGING FILM & TV STUDIO INSPIRING
H PRODUCT PACKAGING ANIMATION IMAGINATION HDTV PHOTOGRAPHY INTERACTIVE
EATIVITY MULTIMEDIA JEWELLERY WATCH PRODUCT PACKAGING ANIMATION IMAGINA-
ODUCT PACKAGING ANIMATION IMAGINATION HDTV PHOTOGRAPHY INTERACTIVE IMAG-
& TV STUDIO INSPIRING CREATIVITY CAD AUDIO GRAPHICGRAPHIC FASHION CREATIV-
HDTV PHOTOGRAPHY INTERACTIVE IMAGING FILM & TV STUDIO INSPIRING CREATIVITY
CT PACKAGING ANIMATION IMAGINATION HDTV PHOTOGRAPHY INTERACTIVE IMAGING
MULTIMEDIA JEWELLERY WATCH PRODUCT PACKAGING ANIMATION IMAGINATION HDTV
CKAGING ANIMATION IMAGINATION HDTV PHOTOGRAPHY INTERACTIVE IMAGING FILM
DIO INSPIRING CREATIVITY CAD AUDIO GRAPHICGRAPHIC FASHION CREATIVITY MULTI-
TOGRAPHY INTERACTIVE IMAGING FILM & TV STUDIO INSPIRING CREATIVITY CAD AU-
AGING ANIMATION IMAGINATION HDTV PHOTOGRAPHY INTERACTIVE IMAGING FILM &
EDIA JEWELLERY WATCH PRODUCT PACKAGING ANIMATION IMAGINATION HDTV PHO-
ING ANIMATION IMAGINATION HDTV PHOTOGRAPHY INTERACTIVE IMAGING FILM & TV
INSPIRING CREATIVITY CAD AUDIO GRAPHIC AUDIO GRAPHICGRAPHIC FASHION CRE-
TION HDTV PHOTOGRAPHY INTERACTIVE IMAGING FILM & TV STUDIO INSPIRING CRE-
PRODUCT PACKAGING ANIMATION IMAGINATION HDTV PHOTOGRAPHY INTERACTIVE
EATIVITY MULTIMEDIA JEWELLERY WATCH PRODUCT PACKAGING ANIMATION IMAGINA-
DDUCT PACKAGING ANIMATION IMAGINATION HDTV PHOTOGRAPHY INTERACTIVE IMAG

Members of VTC Group VTC 機構成員

